



Norman C. Heckler & Company

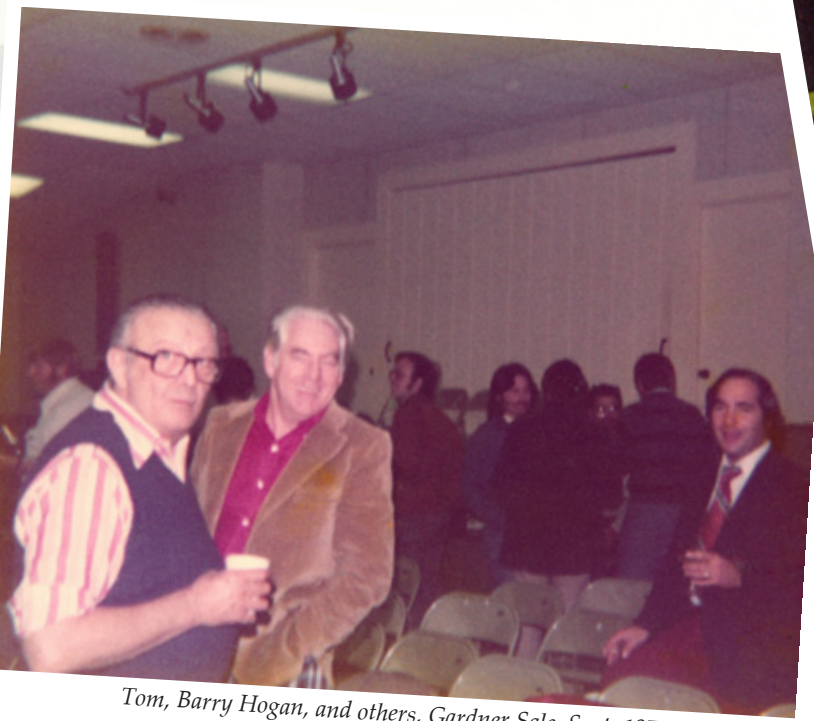
Auction 95 - Session II  
October 19, 2011

Auction 96 - Session III  
February 1, 2012

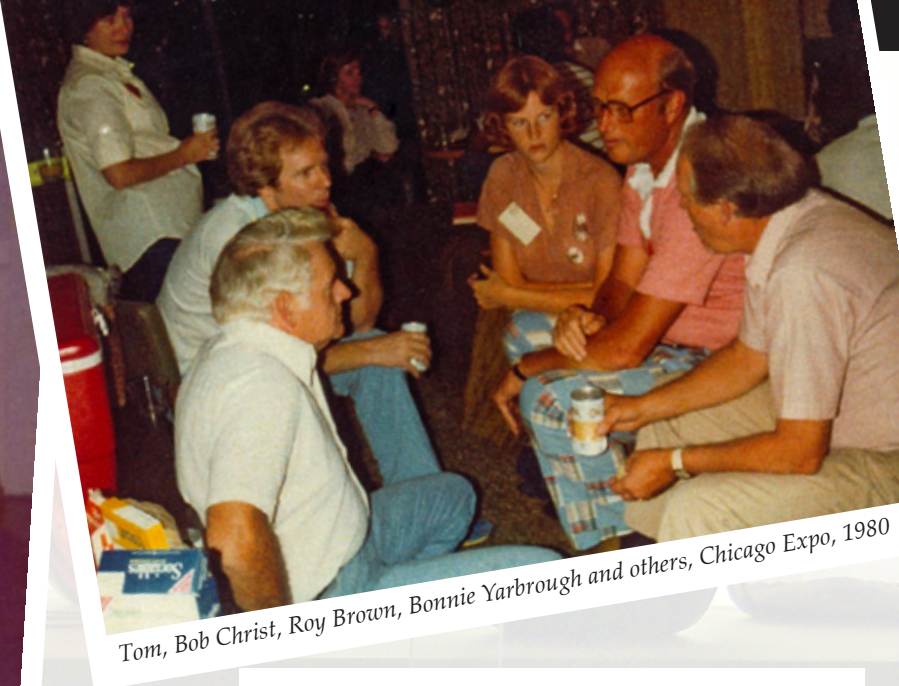


The Thomas McCandless Collection





*Tom, Barry Hogan, and others, Gardner Sale, Sept. 1975*



*Tom, Bob Christ, Roy Brown, Bonnie Yarbrough and others, Chicago Expo, 1980*

See much more on the McCandless Collection online at [www.hecklerauction.com/mccandless](http://www.hecklerauction.com/mccandless) including: bottle pictures, photos and correspondence



*A break in the action at an early USBC Show, early 1970s*



*Tom, Marion, and Jim Whetzel, Keene Show, 1972*



*Left: Tom, Dick and Alma Watson, Marion, Jane Blaske and others at the Blaske Auction, Skimmers 1983*



*Tom looking through his mousetrap collection*



# The Thomas McCandless Collection

## Auction 95 - Session II

Preview by appointment: September 20, 2011 ~ October 18, 2011

Auction Start Date: October 5, 2011 at 9:00 A.M. Eastern Time

Auction Closing Date: October 19, 2011 at 10:00 P.M. Eastern Time

## Auction 96 - Session III

Preview by appointment: September 20, 2011~ January 31, 2012

Auction Start Date: January 18, 2012 at 9:00 A.M. Eastern Time

Auction Closing Date: February 1, 2012 at 10:00 P.M. Eastern Time

### Reference Key

Reference initials and numbers used in the descriptions of this catalog refer to the following publications:

AG	<i>Antique Glass and Bottles, Willy Van den Bossche, 2001.</i>
AP	<i>Glass In Early America, Arlene Palmer, 1993.</i>
Barret	<i>Bennington Pottery and Porcelain, Richard C. Barret, 1958.</i>
B/K	<i>The Glass Industry in Sandwich, Raymond Barlow and Joan Kaiser, 1989.</i>
C	<i>Ink Bottles and Inkwells, William Covill, 1971.</i>
D	<i>American Sarsaparilla Bottles, John DeGrafft, 1980.</i>
Du	<i>Collector's Guide to Poison Bottles, Roger Durlinger, 1973.</i>
G	<i>(Flasks) American Bottles &amp; Flasks (PartVIII), Helen McKearin and Kenneth Wilson, 1978.</i>
G	<i>(Blown Three Mold) American Glass (Chapter VI), George S. and Helen McKearin, 1941.</i>
H	<i>American Bottles in the Charles B. Gardner Collection, Norman C. Heckler, 1975.</i>
NCH	<i>The Blaske Collection of American Flasks, Norman C. Heckler, 1983.</i>
NCH II	<i>The Blaske Collection: Part II, Norman C. Heckler, 1983.</i>
K	<i>Poison Bottle Workbook, Rudy Kuhn, 1988.</i>
KW	<i>New England Glass &amp; Glassmaking, Kenneth M. Wilson, 1972.</i>
L	<i>The Red Book of Fruit Jars, No. 9, Douglas M. Leybourne, Jr., 2001.</i>
Lee	<i>American Glass Cup Plates, Ruth Webb Lee and James H. Rose, 1948.</i>
LRB	<i>The Complete Book of Lightning Rod Balls, Mike Bruner and Rod Krupka, 1995.</i>
McK	<i>American Glass, George S. and Helen McKearin, 1941.</i>
MW	<i>American Bottles &amp; Flasks and Their Ancestry, George McKearin and Kenneth Wilson, 1978.</i>
N	<i>Great American Pontiled Medicines, Frederick Nielson, 1978.</i>
Na	<i>Barber Bottles with Price, Robert Namiat, 1977.</i>
P	<i>The Glass Gaffers of New Jersey, Adeline Pepper, 1971.</i>
PG	<i>Pittsburgh Glass, Lowell Innes, 1976</i>
PME	<i>Pontil Medicine Encyclopedia (Second Edition), John Odell, 2007.</i>
R/H	<i>Bitters Bottles, Carlyn Ring and W. C. Ham, 1998.</i>
RD	<i>Understanding Antique Wine Bottles, Roger Dumbrell, 1983.</i>
RH	<i>Collecting Barber Bottles, Richard Holiner, 1986.</i>
T	<i>Collectors Guide to Saratoga Type Mineral Water Bottles, Donald Tucker, 2006.</i>
TH	<i>Two Hundred Years Of American Blown Glass, Helen and George McKearin, 1949.</i>
U	<i>Collectible Character Bottles, Authur Umberger, 1969.</i>
Z	<i>Ketchup, Pickles, Sauces, Betty Zumwalt, 1980.</i>

- The dash is generally used to indicate that the descriptions are on opposite sides of the bottle or flask.

/ The slash is used to indicate that the descriptions are on different lines or surfaces of the bottle.

## CONDITIONS OF SALE

1. **Absentee Auction:** The items in this catalog will be sold at unreserved absentee auction with the following closing dates: **Session II (Lots 1-123), Wednesday, October 19, 2011. Session III (Lots 124-245), Wednesday, February 1, 2012**

2. **Descriptions:** Norman C. Heckler & Company has made every attempt to describe correctly the property being sold. Descriptions are guaranteed to be accurate as regards authenticity, age, condition, and measurements to within one-fourth inch, as represented in this catalog. In describing damage, exterior wear or manufacturer's flaws that in our opinion, do not significantly detract visually or monetarily from the value of the item are not listed and will not be considered for refund. The Auctioneers reserve the right to make verbal corrections and provide additional information at any time during the sale.

3. **Preview :** Items in the respective session may be viewed by appointment from September 20, 2011 through January 31, 2012.

4. **Bidding Procedure:** Bidding on an item may be done in one of five ways: 1. Bidding by telephone, 2. Internet Bidding, 3. Submitting bids by Fax, 4. Bids submitted by email (valid only if bid is confirmed by Norman C. Heckler & Company), 5. Bidding by Mail.

Your bid, written, oral or electronic, grants Norman C. Heckler & Company the authority to protect you up to the amount of your stated bid. **Your bid will not be removed once executed.**

You may telephone us at any time (weekdays 9 A.M. - 5 P.M ) during the auction, prior to the closing of the sale, to check the status of your bids, to find the current bidding level, to open a bid, or to raise a bid on an auction lot.

### MINIMUM BID IS ONE-HALF THE LOW ESTIMATE

<i>Increments are as follows:</i>	
Up to \$250.00.....increments of <b>\$10.00</b>	\$1000.00 - \$2500.00.....increments of <b>\$100.00</b>
\$250.00 - \$500.00.....increments of <b>\$25.00</b>	\$2500.00 - \$5000.00.....increments of <b>\$250.00</b>
\$500.00 - \$1000.00.....increments of <b>\$50.00</b>	\$5000.00 - \$10000.00.....increments of <b>\$500.00</b>
\$10,000 & Up.....increments of <b>\$1000.00</b>	

An example - You bid \$900.00 on a lot which is the highest bid received to date. The second highest bid is \$550.00. The current high bidding level would be yours at \$600.00. Any other bids submitted by others below \$900.00 will be automatically topped by a representative of Norman C. Heckler & Company, bidding on your behalf.

Norman C. Heckler & Company will not disclose bids pledged by others; only the current bidding level of a lot will be stated upon request.

The highest bidder shall prevail. It is the sole right of the auctioneer to settle any dispute between bidders and to regulate the bidding procedure. The auctioneer reserves the right to refuse any bid believed not to have been made in good faith.

Each lot in the sale has an estimate based on current value as an intended guide to bidding. Bids may be made daily, until closing dates (Session II - October 19, 2011 and Session III - February 1, 2012), from 9 A.M. - 5 P.M. Eastern Time. Incoming bids will be accepted on the closing day (Session II - October 19, 2011 and Session III - February 1, 2012) until 10 P.M. Eastern time. If bidding by mail we urge you to send your mail bids as early as possible. We are pleased to receive bids by telephone so that we can answer any questions and assist you in your bidding.

5. **Return Call or "Call Back" Process:** If requested, the three top bidders of an item at the time of closing will be given a "Call Back" over the next number of days in order to resolve the final sale of an item. You can request this service by "checking" the appropriate box on your absentee bid form, checking the box online as part of internet bidding or by verbal agreement over telephone.

If you have requested a "Call Back", the auctioneers will need to contact you on the days following the auction closing between the hours of 8 A.M. and 9 P.M. Eastern Time. Bidders must provide the appropriate telephone numbers where they can be contacted. Bidders who are in transit must call Norman C. Heckler & Company during the Call Back period twice daily. Bidders with Call Back privileges on an item may call our office at any time during business hours when timing on that item seems essential.

**Only the top three bidders at the sale closing are entitled to "Call Backs".** It is the responsibility of the bidder to insure he has qualified for this service.

**The bidder will forfeit his rights to a "Call Back" if the auctioneers are unable to reach that bidder.**

**No "Call Backs" will be executed for bids under \$1,000.00 for this auction. In the event of tie bids, the earliest received bid will be the winning bid.**

Norman C. Heckler & Company reserves the right to discontinue "Call Backs" (3) three days after the closing date of the sale.

6. **Successful Bidders:** Successful bidders will be notified by mail. A 17% buyer's premium will be added to the hammer price to be paid by the buyer as part of the purchase price. Payment is due immediately upon receipt of notification of purchase. No exceptions.

If you are a Connecticut resident, a 6.35% sales tax will be added to your bill, unless you provide Norman C. Heckler & Company with a tax exemption permit. Sales tax is also applicable to out of state buyers who pick up their purchases at our location unless you have a tax exempt number from Connecticut or your state on file with us. Purchases will be shipped only after full payment has been received. All items will be shipped via United States Postal Service. Shipping, handling and insurance are extra. Our charges for shipping (excluding foreign shipments) are \$20.00 for the first item, \$9.00 for each additional item together with extra insurance costs (\$0.60 per \$100.00). **We encourage you to plan for a pickup of your items at our offices.**

7. **Refunds:** Refunds will be given at the discretion of the Auctioneers. Items purchased must be examined and a request for refund made **immediately** upon receipt of the item or items. Since opinions can differ, particularly in the matter of condition, the Auctioneers will be the sole judge in the consideration of refunds. Refunds requested on the grounds of authenticity must be made within 15 days of the date of the auction, and such refund requests must be accompanied by at least one supporting statement in writing from an authority recognized by the Auctioneers. **Absolutely no returns after 30 days of the closing of the sale.** It is the Auctioneers sincere intention to consider any reasonable request for a refund.

8. **Bidding on any item indicates your acceptance of these terms.**

# Tom McCandless

## 1924-2010



### My Father's New Hobby

Our father's new hobby began to get our attention when, after a long day at work, he started disappearing into the basement in the evenings to scrub dirty old bottles. As three active boys we noticed even more when some of the cleaned up bottles started to appear upstairs and, for the first time, we had to exercise some restraint and try not to bash into these odd new decorations. As his new interest grew, we sometimes tagged along on Sunday mornings to explore river banks or, following the tips of old timers from town, look for long abandoned dumps and farm houses in the woods. Neither No Trespassing signs, nor clouds of knats could deter him. It was like treasure hunting but the treasures were grimy old bottles that looked worthless and hopeless until their trip to the basement where Pop worked his magic. Our ping pong table was converted into his shipping department as it turned out there were nutty people all over the country who would actually pay good money for old bottles, who knew? The digging expeditions soon evolved into weekend trips to places we had never heard of, Shupp's Grove, Rancocas Woods and too many flea markets to name. He and David, the last of us left at home, would get up at ungodly hours to head off into the dark for the chance to parlay a few "pretty good bottles" into something really special, a keeper.

After a few years there were quite a few "keepers". In spite of the fact that we boys had moved out, our house continued to expand to accommodate Pop's growing collection and the bottle room appeared. With a keen eye and constant study, he created a collection that attracted visitors from far and wide and we realized our house had become a sort of museum. Little visitors soon learned to ask, "Is this an antique?" and were directed towards the, "not so old" toys that were available for those occasions. Pop's enthusiasm was contagious as we witnessed how he lit up when visitors expressed an interest his collections. This was never more evident than after he broke his hip and was heavily sedated for pain. He would go for hours without opening his eyes despite being surrounded by family. But when his buddies from the Lambertville Market showed up, he perked up and bantered on and on about recent finds the latest news from the market. Over the years we have met many of his fellow collectors who were so much more than mere colleagues. Our mother and father were privileged to enjoy so many years of travel and camaraderie with such a wonderful group of friends. We will miss them and all of you and the magical world that they created in our old home.

Jeff McCandless



With me, the only time Tom McCandless came in second place was when I thought of my own Dad. I met Tom about 30 years ago when I first moved in to Hopewell Valley. I was always so proud to call Tom and Marion my friends. I knew right from the start that these were folks you just wanted to be around.

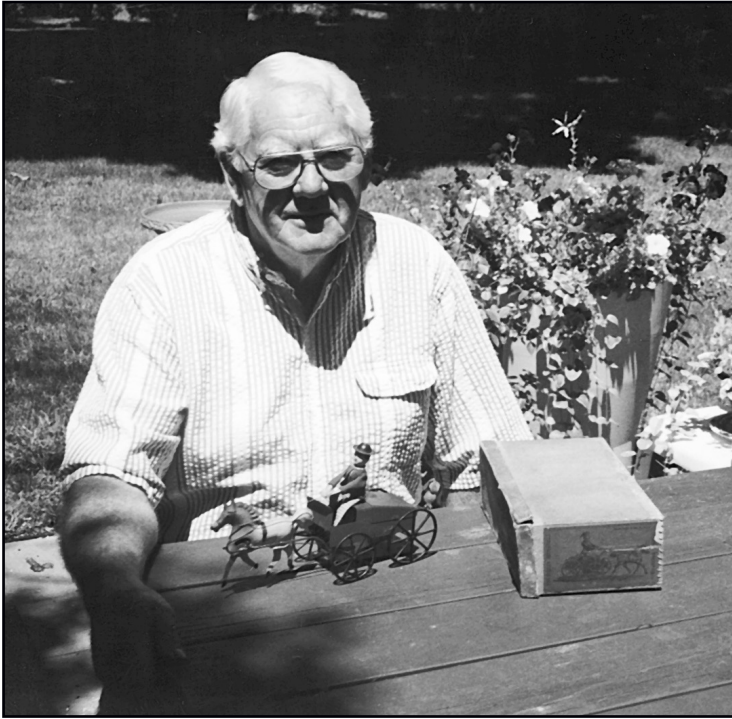
Tom was so well rounded that you could always learn something new with every conversation. Flasks, Christmas lights, target balls, fruit jars, bitters, glass of any category, mushrooms (mycology), antique toys, Hopewell Valley History, and travel local and worldwide were just a few of his passions. Truly though, Tom's number one passion was living life. Family and friends, people in general, and a zest for life were the things that made Tom tick! Fiercely independent and always interested in learning, Tom always had something going on. We'd go to bottle shows together, he in his 80's and me in my 50's and Tom would insist on driving! The only argument we ever had was when we went to the Elks for dinner on Friday nights and he would always try to pay the bill before me. (Once he knew that it really bothered me, he gave in and split the bill with me!)

Tom taught me so many things. When his wife Marion passed away (she was another of this world's truly wonderful individuals), Tom taught us all composure, grace and strength. When Tom would sell a toy or a good bottle and send the proceeds to his grandchildren for their education, he taught us the real value of love for family. If someone told an off color joke or started speaking badly about someone, Tom would quietly leave the room, teaching us character. Tom told me once to always sit up front at an auction--he always wanted to bid his way without a care of who was bidding against him, thereby teaching us the lesson of fair play. I'd call Tom and say "there's a paper show in Allentown tomorrow". He'd say "I'll scoop you up at 8 am, be ready!" teaching me the lesson of being enthusiastic. Most of all, I'd call Tom or we'd go to deliver Meals on Wheels together and we'd talk for hours about everything and anything, and so, the lesson of being a friend, a real friend. Tom was more knowledgeable than anyone really knew about glass and just about everything, and was always willing to help you learn as well.

Tom Brokaw wrote of the greatest generation in his book. Tom was a WW II vet (you should have heard those stories!) and gave me the book to read which I did. In my heart, Tom McCandless will always be the finest of the great generation.

Bob Strickhart





Building on the foundation laid by many of the great first and second generation scholars and collectors, Thomas McCandless showed an unparalleled dedication and zeal for the bottle and glass hobby. Tom, with the aid of his wife Marion, assembled the landmark collection of bottles and flasks in the pages that follow.

This catalog represents a single owner collection amassed over more than forty years, a rarity in today's bottle auction era. Every item in these McCandless catalogs came directly from his shelves in Hopewell, New Jersey. Tom loved the diversity on those shelves - all the glass categories and beyond. Flasks, bitters, whiskeys, medicines, milks, sodas, fruit jars, pickles - all had a place in Tom's collection as he had an eye for all kinds of glass. The variety of this collection speaks to the true breadth of Tom's interests, knowledge, insatiable curiosity, and love of the hobby.

Over the months that we have cataloged and pictured his collection, we have marveled at Tom's method of collecting. The quality and the breathtaking range of

beautiful colors that exist in this collection are immediately obvious. After just a few hours with the entire collection, it occurred to me that Tom was one of the first collectors to focus on color diversity. Although accepted by collectors today as perhaps the most important characteristic of an important glass collection, Tom keenly focused his efforts on this criterion long before many in the hobby began to do likewise.

We thoroughly enjoyed reading through Tom's handwritten notes and the abundant documentation that accompanies the collection. His unique and detailed records provided us a bird's eye view of over four decades of effort as he amassed these items. The correspondence, notes, and photographs that we've included in the catalogs provide an intriguing perspective into how the collection took shape, and it's through these everyday glimpses of Tom's journey that a chronicle of what many consider to be the golden age of bottle collecting emerges.

As you peruse the catalogs and the additional information on our website, please note that the sources from which Tom purchased his items are as diverse as the items themselves. His notes detail a wide array of acquisition methods including: auctions, shows, friends, collectors, antique dealers, mail order, antique shops, and more. The Golden Nugget, Jim Whetzel's Bottle Shop, Sam Laidacker and Burt Spiller mail order lists, Dave Goad "The Traveling Bottle Man", a purchase from Arthur Barrus or Charles Vuono, The Chicago Expo, an antique show while on vacation with his family - all were avenues to find items that ultimately landed in his collection. Tom's notes, receipts, and transaction records are brimming with these names and many others, near and far places, and information that form a rich mosaic of people tied to this great hobby.

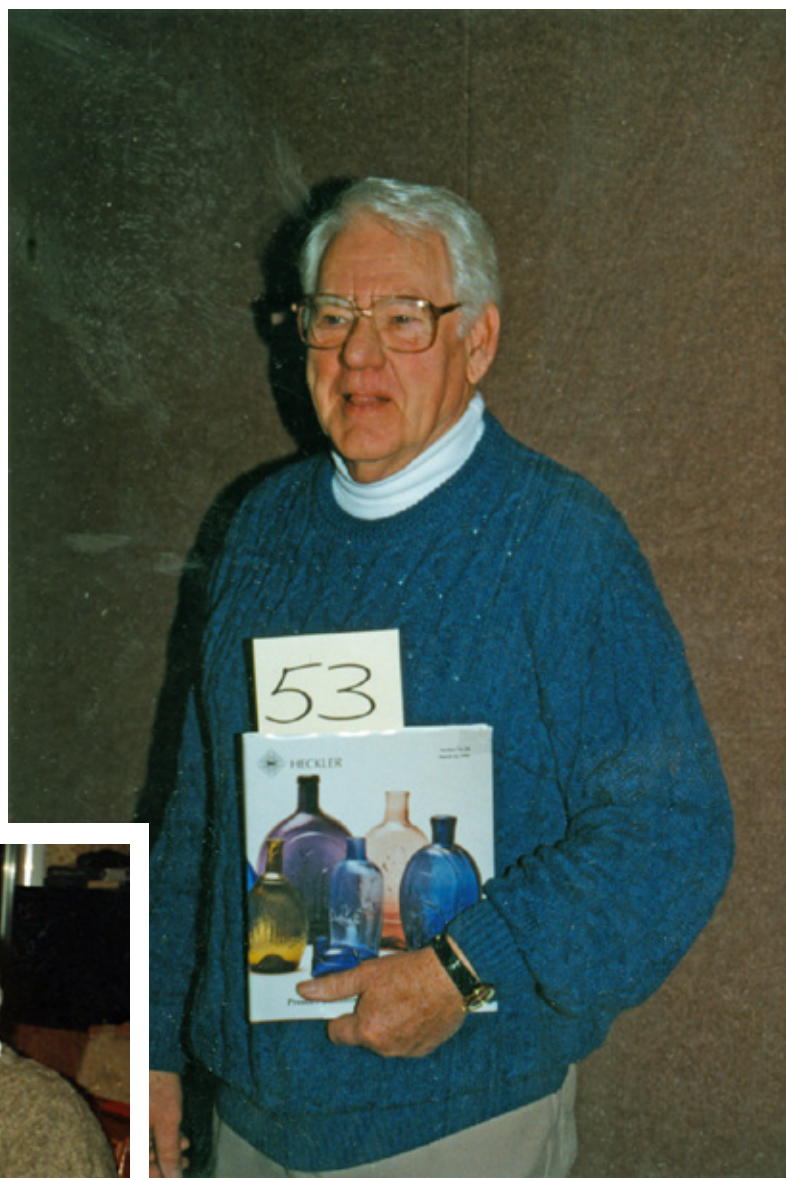
We feel privileged to present the bottle and flask collection of Thomas McCandless at auction in these catalogs on behalf of the McCandless family and would like to thank the McCandless family and many in the bottle community that provided all manner of information, support, and material that has made this catalog so much more than just a presentation of bottles at auction, but rather a celebration of a vibrant hobby icon.

Great rarities in flasks and bottles abound in the McCandless Collection. Several items in this collection are so exceptional in either color or mold that few will come to the market again in our lifetime. Tom certainly had favorites, as did Marion. It's our hope that now new collectors will not only find their favorites, but also enjoy and perpetuate all of the camaraderie, passion, and commitment that will forever be connected with this collector and his collection. It would make Tom happy!



*"Tom was what a real friend should be and will be fondly remembered by all".*

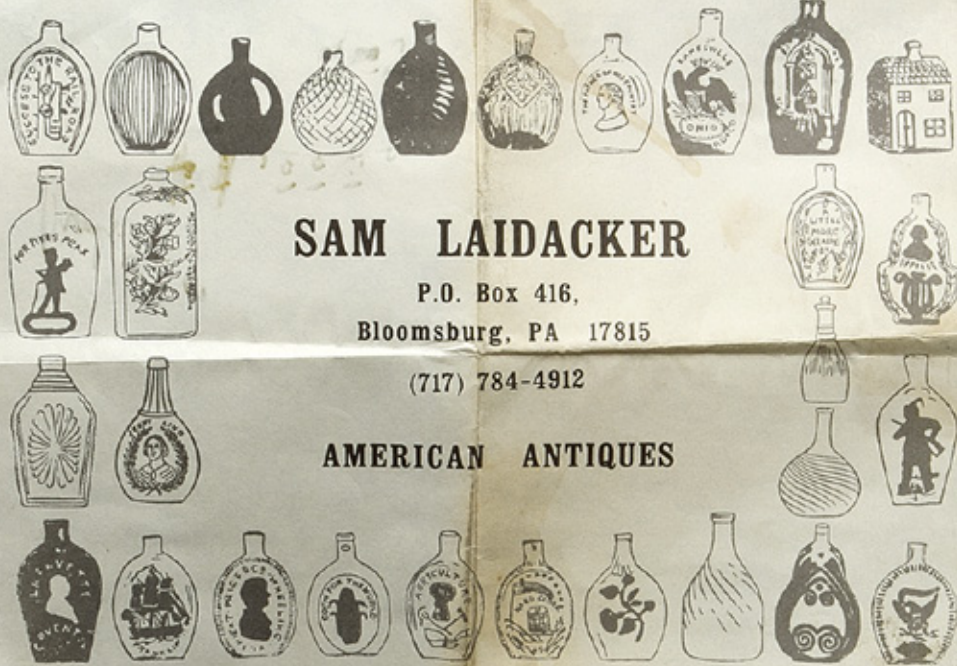
*-Ed DeHaven*





# Session II - Lots 1 - 123

Auction Close: October 19, 2011 at 10 PM Eastern  
 Bidding Begins: October 5, 2011 at 9 AM Eastern



## SAM LAIDACKER

P.O. Box 416,  
 Bloomsburg, PA 17815  
 (717) 784-4912

## AMERICAN ANTIQUES

Aug. 8, 1976

Tom Mc Candless,  
 Hopewell, N.J.

Dealer resale

Ruby expanded diamond perfume bottle from collection of Mrs. Samuel D. Riddle. This was in her collection that was on exhibition in the Art Museum, Philadelphia and was sold anonymously at Freemans. E.D. Beehm and I bought a large part of that collection in partnership and I bought his interest when we settled accounts from this sale, Parker cup plates, etc

Lot glass cup plates Kay personal	\$1000.00
Ship Constitution Cybis cup plate Kay	75.00
8190 Lacy nappy (sauce dish) with eagle without shield	5.00
64-139 R105 Acorn tassel cup plate	35.00
74 'Saml Hart & co Phila & New York flask with pewter cup	8.00
	15.00

-----  
 1138.00

Scroll 2000

# 8537- 538<sup>5</sup>  
 8538- 1515<sup>00</sup>



1

1. **Pattern Molded Flask**, 15 diamond pattern, America. Flattened bulbous form, ruby red, sheared mouth - pontil scar, ht. 5 1/2 inches, greatest wth. 3 7/8 inches.

Similar pattern and form to MW color plate II #2 Beautiful condition, rare and unusual color. A note from Tom on the base says "Marion's favorite, she wouldn't handle it, but when we had visitors she would always say 'show them the red one' ". Ex Mrs. Samuel Riddle collection. Exhibited at the Philadelphia Art Museum. Ex Sam Laidacker (see page 7). Sold at Freemans' Auction.

\$5000-10000





2

2. "Genl Taylor" And Bust - "Fells Point / Balto" And Monument Portrait Flask, Baltimore Glass Works, Baltimore, Maryland, 1830-1850. Puce with a gray overtone, inward rolled mouth - tubular pontil scar, pint.  
GI-73 Fine condition, extremely rare color, beautiful. Ex Edmund & Jayne Blaske collection. Note on the bottom by Tom indicating "one of my favorites".  
\$10000-20000



3

3. **Solder And "Balt, MD" - Dancer Fanny Eissler And "Chapman" Pictorial Flask**, Chapman's Maryland Glass Works, Baltimore, Maryland, 1860-1870. Yellowish olive, applied mouth with ring - smooth base, pint; (some high point wear on the dancer side).  
GXIII-12 Beautiful and rare color. Fine condition. \$1500-3000



4

4. **Eagle - "Drafted" In Pennant With Full Figure Of Draftee Historical Flask**, possibly Zanesville Glass Works, Zanesville, Ohio, 1860-1865. Aquamarine, applied collared mouth with ring - smooth base, pint; (3/4 inch flat chip on top of mouth).  
GII-140a Brilliant glass, strong embossing. Extremely rare. Ex Richard Watson collection. \$1200-1400



5

5. **"Morning (Star) Bitters" Figural Bottle**, America, 1845-1860. Triangular, light golden amber, applied sloping collared mouth - iron pontil mark, ht. 12 inches; (some wear on the lower portion of the sloping collar).  
R/H #M 135 \$250-500



6

6. **"Traveler's / (Eight Pointed Star) / Companion" - "Ravenna / (Eight Pointed Star) / Glass Co." Lettered Flask**, Ravenna Glass Works, Ravenna, Ohio, 1845-1860. Yellow with an olive tone, applied round collared mouth - iron pontil mark, pint; (3/8 inch interior shoulder bruise does not come to the surface).  
GXIV-3 Beautiful color, strongly embossed. \$500-1000



7

7. **"Baltimore" And Monument - "Corn For The World" And Ear Of Corn With Husk Historical Flask**, Baltimore Glass Works, Baltimore, Maryland, 1840-1860. Aquamarine, sheared mouth - tubular pontil scar, pint; (lettering is somewhat weakened above the corn).  
GVI-6 A splotch of glass is added, in a manufacturer's flaw, along the medial rib to the left of the monument. Fine condition, bright example. \$250-500



8

8. **Washington Bust And "Albany Glass Works / Albany / NY" - Sailing Vessel Portrait Flask**, Albany Glass Works, Albany, New York, 1848-1850. Golden amber, applied double collared mouth - iron pontil mark, pint; (1/2 inch neck crack starting at a crudely formed mouth).  
GI-28 Strong embossing, good color. \$750-1500



9

9. **"Lafayette" And Bust - "De Witt Clinton" And Bust Portrait Flask**, Coventry Glass Works, Coventry, Connecticut, 1824-1825. Light olive yellow, sheared mouth - pontil scar, pint; (some minor exterior high point wear).  
GI-80 Good embossing, bright clear color. A fine example. \$1000-2000



10

10. **Cornucopia - Urn Pictorial Flask**, possibly Coventry Glass Works, Coventry, Connecticut, 1830-1848. Bright clear green, sheared mouth - pontil scar, half pint; (shallow 1/8 inch flat flake on the top of the mouth).  
GIII-7 Beautiful color, strong embossing. \$250-500





11

11. **Washington - Taylor Portrait Flask**, Dyottville Glass Works, Philadelphia, Pennsylvania, 1840-1860. Puce, sheared mouth - pontil scar, quart; (some exterior high point wear on each of the busts). GI-37 Exceptional color, fine condition. Ex Edmund and Jayne Blaske collection. \$5000-10000



12. **Washington - Taylor Portrait Flask**, Dyottville Glass Works, Philadelphia, Pennsylvania, 1860-1870. Sapphire blue, applied heavy sloping collared mouth - smooth base, quart. GI-54 Beautiful color, great condition. Ex Scholl collection. \$4000-8000



12



13

13. **Washington - Eagle Portrait Flask**, possibly Bridgeton Glass Works, Bridgeton, New Jersey, 1830-1850. Amethystine, sheared mouth - pontil scar, quart; (some minor mouth roughness).  
GI-26 Good bold embossing, beautiful light color. Ex Sam Taylor collection. \$750-1500



14

14. **Washington - Taylor Portrait Flask**, Dyottville Glass Works, Philadelphia, Pennsylvania, 1840-1860. Cobalt blue, sheared mouth - tubular pontil scar, pint; (manufacturer's mouth roughness, large unusually crude bubble and bubble burst on the shoulder to the left of the Washington bust).  
GI-44 Beautiful color, fine condition. Ex Bud Burdick. \$4000-8000



15

15. **"Greeley's Bourbon / Bitters." Figural Bitters Bottle**, America, 1860-1880. Barrel form, yellowish olive green, applied square collared mouth - smooth base, ht. 9 1/4 inches; (pinhead sized flake from the side of the square collared mouth).  
R/H #G101 Beautiful color, fine condition. Ex Eugene Heisey collection. \$2000-4000



16

16. **"Baltimore" And Monument - "Corn For The World" And Ear Of Corn With Husk Historical Flask**, Baltimore Glass Works, Baltimore, Maryland, 1860-1870. Peachy puce, applied collared mouth with ring - smooth base, quart; (some light exterior high point wear).  
GVI-4 Beautiful color, fine condition, particularly strong embossing. Ex Lipincott collection. \$5000-10000



17

17. **"Bininger's Regulator / 19 Broad St. New York." Figural Whiskey Bottle**, America, 1840-1860. In the form of a clock, light yellow amber, applied double collared mouth - pontil scar, ht. 6 inches.  
H #95 Fine condition, good light color. Ex Warren Haynes collection. \$400-800



18

18. **"A.M. Bininger & Co / New York" Whiskey Type Bottle**, America, 1860-1880. Square with beveled corners, yellow olive, applied sloping collared mouth - crude smooth base, ht. 9 3/4 inches.  
Similar to H #2447 Beautiful color, crude early bottle. \$100-200



19

19. **Eagle - "Coffin & Hay. / Hammonton" And Flag Historical Flask**, Coffin and Hay Manufacturers, Hammonton, New Jersey, 1840-1860. Deep blue green, sheared mouth - tubular pontil scar, quart; (a 1 1/4 inch diagonal neck crack on the eagle side, iridescent bruise at the top of the mouth at the beginning of the crack).  
GII-48 Beautiful color, strong embossing, a great bottle. \$750-1500



20

20. **Fancy Scroll Flask**, probably Pittsburgh district, Pittsburgh, Pennsylvania, 1840-1860. Elaborate corseted form with acanthus leaves and fancy scroll work, light blue green, sheared mouth - pontil scar, quart.  
GIX-46 Handsome, big, fancy bottle. Ex Edmund DeHaven collection. \$1000-2000





21. **Sheaf Of Wheat - Five Pointed Star Pictorial Flask**, possibly Bulltown Glass Works, Bulltown, New Jersey, 1845-1860. Bright yellow green with deeper profuse olive green striations, applied double collared mouth - iron pontil mark, quart. GXIII-38 Fine condition, unlisted and beautiful color. Ex Robert Pattridge collection #281. \$4000-8000



22. **Washington - Taylor Portrait Flask**, Dyottville Glass Works, Philadelphia, Pennsylvania, 1840-1860. Light to medium gray blue with deeper profuse blue horizontal striations, sheared mouth - pontil scar, quart. GI-43 Exceptional example, strong embossing, unlisted and beautiful color. Ex George Austin collection. \$10000-20000





23

23. "A.M. Bininger & Co. 338 Broadway, N.Y. / Old Kentucky / 1849 / Reserve / Bourbon" Figural Whiskey Bottle, America, 1840-1860. Barrel form, golden amber, applied square collared mouth - pontil scar, ht. 7 1/2 inches.

H #439 Fine condition. \$200-400

24. "Lowell / Railroad" And Horse and Cart - Eagle Historical Flask, Coventry Glass Works, Coventry, Connecticut, 1830-1848. Yellow olive, sheared mouth - pontil scar, half pint.

GV-10 Good embossing, beautiful color. \$250-500



24



25

25. Target Ball, shooter, possibly America, 1880-1900. Diamond pattern interrupted by two medallions with embossed shooter, medium striated amethyst, sheared mouth, dia. 2 5/8 inches.

Fine condition, unusual and beautiful color. \$300-600

26. "For Pike's Peak" And Prospector - Eagle Historical Flask, probably Pittsburgh district, Pittsburgh, Pennsylvania, 1860-1870. Yellow olive, applied mouth with ring - smooth base, quart; (some minor short scratches below the word "For").

GXI-24 Fine condition, unlisted and extremely rare color. Ex Lipincott collection. \$1500-3000



26



27

27. Eagle - "New London / (Anchor) / Glass Works" Historical Flask, New London Glass Works, New London, Connecticut, 1856-1860. Bright bluish green, sheared mouth - pontil scar, half pint; (mouth roughness with 1/8 inch flat flake from the side of the mouth).

GII-67 Beautiful color, generally fine condition. Ex Lipincott collection. \$1000-2000

28. Scroll Flask, probably Louisville Glass Works, Louisville, Kentucky, 1845-1860. Midnight blue, sheared mouth - tubular pontil scar, pint.

GIX-10 Beautiful dense cobalt blue, strong embossing, great condition. Ex Krassner collection. \$5000-10000



28



29

29. Pitkin Type Flask, ribbed and swirled to the left, 32 ribs, Midwest America, 1815-1830. Yellow olive, sheared mouth - pontil scar, pint plus, ht. 7 inches; (some very minor high point wear at the shoulder and the base).

Beautiful color, fine condition. \$400-800

30. "Wheat. Price & Co Wheeling Va." And Short Haired Bust - "Fairview / Works" and Factory Portrait Flask, Wheat Price and Company Manufacturers, Wheeling, West Virginia (Virginia), 1820-1840. Light blue green, sheared mouth - pontil scar, pint.

GI-115 Fine condition, strong embossing, beautiful color. Ex Edmund and Jayne Blaske collection. \$7500-15000



30





31

31. **"Union" And Clasped Hands - Eagle Historical Flask**, Pittsburgh district, Pittsburgh, Pennsylvania, 1860-1870. Citron, unusually long applied mouth with ring - smooth base, pint.  
GXII-24 Beautiful color, fine condition. \$1000-2000

32. **"Rohrer's Expectorant / Wild / Cherry / Tonic / Lancaster Pa" Figural Medicine Bottle**, America, 1860-1870. Pyramid form with roped corners, yellow amber, applied sloping collared mouth with ring - smooth base, ht. 10 1/2 inches.  
Similar to H #629 Great condition, beautiful color. \$250-500



32



33

33. **Scroll Flask With Anchor**, probably John Robinson & Son Manufacturers, Pittsburgh, Pennsylvania, 1830-1850. Cornflower blue, sheared mouth - tubular pontil scar, half pint.  
GIX-41 Fine condition, beautiful color. Ex Nevil collection, ex Charles B. Gardner collection. \$1200-2400

34. **Battle Monument - "A / Little / More / Grape / Capt Brag" Historical Flask**, Baltimore Glass Works, Baltimore, Maryland, 1840-1860. Peach puce, sheared mouth - tubular pontil scar, half pint; (slightly weakened lettering).  
GVI-1 Cute little bottle, beautiful color, fine condition. Purchased from Ruby Sturgis. \$3000-6000



34



35

35. **Lot Of Three Barber Bottles**, possibly America, 1880-1920. Bulbous with long necks and stars and stripes design, one red, one white and one blue example, tooled round collared mouths - ground pontil marks, ht. 7 inches.  
Similar to RH page 76 and page 114 right Good condition, beautiful colors, very patriotic. \$250-500

36. **"Liberty" / Sheaf Of Wheat - Five Pointed Star Historical Flask**, probably Baltimore Glass Works, Baltimore, Maryland, 1840-1860. Aquamarine, sheared mouth - pontil scar, half pint.  
GX-11 Fine condition. Ex George Austin collection. \$500-1000



36



37

37. **Two Men Talking - Grotesque Head Pictorial Flask**, probably Denmark, 1840-1860. Cobalt blue, sheared mouth - pontil scar, half pint; (1/8 inch flake from the base).  
GX-12 This example, unlike others we have seen, has acid etched or engraved lettering above and below figures and the date "1866". Beautiful color. \$300-600

38. **Washington - Taylor Portrait Flask**, Dyottville Glass Works, Philadelphia, Pennsylvania, 1840-1860. Yellow, sheared mouth - tubular pontil scar, pint.  
GI-44 What a great color, strong embossing. An exceptional bottle. Ex Scholl collection. \$1500-3000



38



39

39. **Bust Of Columbia - Eagle And "B & W" Portrait Flask**, America, 1825-1840. Aquamarine, sheared mouth - tubular pontil scar, pint; (some dullness on the shoulder above the eagle).  
GI-121 Good deep aquamarine. \$300-600

40. **Washington - Taylor Portrait Flask**, Dyottville Glass Works, Philadelphia, Pennsylvania, 1860-1870. Golden yellow with an olive tone, applied sloping collared mouth - smooth base, quart; (an elongated bubble on the Taylor side has a shallow burst portion, some exterior high point wear on both busts).  
GI-54 Rare color. \$1200-2400



40



41

41. **Scroll Flask**, probably Louisville Glass Works, Louisville, Kentucky, 1845-1860. Yellow green, applied mouth with ring - rectangular iron pontil mark, quart.  
GIX-1 Beautiful color, fine condition. Purchased at a Richard Bourne Auction. \$1200-2400

42. **Early Half Size Wine Bottle**, England, 1700-1740. Cylindrical sloping slightly from shoulder with long neck, yellow olive, sheared mouth with string rim - pontil scar, ht. 6 inches, base dia. 3 7/8 inches; (an unearthened bottle, 1/4 inch chip from the side of the mouth above the string rim, some light exterior stain).  
Similar to McK plate 221 #5 Partial sticker on the side indicates, what Tom mentions in his notes, that this bottle was "Dug on Winchester Street in London". \$300-600



42



43

43. **Double Eagle Historical Flask**, probably Kentucky Glass Works, Louisville, Kentucky, 1840-1860. Bright medium bluish green, sheared mouth - pontil scar, quart; (slightly weakened embossing near the shoulder).  
GII-26 Beautiful color, fine condition. \$1500-3000

44. **"Caspers Whiskey / Made By Honest / North / Carolina People" Fancy Whiskey Bottle**, America, 1870-1890. Cylindrical with fancy shoulder flutes, cobalt blue, tooled sloping collared mouth with ring - smooth base, ht. 11 3/4 inches.  
Fine condition, this example has never been in the ground. Beautiful color. \$300-600



44



45

45. **"Success To The Railroad" And Locomotive Historical Flask**, Lancaster Glass Works, Lancaster, New York, 1830-1850. Aquamarine, sheared mouth - pontil scar, pint; (somewhat weakened embossing).  
GV-1 Brilliant glass, pebbled appearance, generally fine condition. \$300-600

46. **Sunburst Flask**, Keene Marlboro Street Glassworks, Keene, New Hampshire, 1815-1830. Medium bright green, sheared mouth - pontil scar, pint.  
GVIII-2 Fine condition, good color, a fine example. \$300-600



46





47

47. **Eagle - Eagle With Snake In Beak Historical Flask**, early Pittsburgh district, Pittsburgh, Pennsylvania, 1820-1840. Colorless with a vaseline tint, sheared mouth - pontil scar, pint; (some very minor inside stain spots, 1/4 inch flat flake at the base).  
GII-9 Fine example, strongly embossed, one of the most popular of the historical flasks, nicknamed the "Snake of Corruption". Ex Swank collection auction. \$4000-8000



48. **"Isabella / (Anchor) Glass Works" - Factory Historical Flask**, Isabella Glass Works, New Brooklyn, New Jersey, 1840-1860. Blue green, sheared mouth - pontil scar, half pint; (some light exterior high point wear, 3/8 inch shallow chip from the base that barely shows to the edge).  
GXIII-57 Rare flask, displays exceptionally well, extremely rare color. Ex Charles B. Gardner collection #164. \$5000-10000



48



49

49. **Cornucopia - Urn Pictorial Flask**, Lancaster Glass Works, Lancaster, New York, 1845-1860. Yellow olive, sheared mouth - tubular pontil scar, pint.  
GIII-17 Fine condition, strong embossing, exceptional color. Ex David Goad. \$1500-3000

50. **Target Ball**, "Bogardus Glass Ball Patented April. 10 1877.", America, 1877-1900. Diamond pattern above and below embossed center band, light golden yellow, sheared mouth, dia. 2 5/8 inches.  
Beautiful and unusual color, fine condition. \$250-500



50



51

51. **Jenny Lind Bust And Lyre Scroll Type Portrait Flask**, probably McCarty And Torreyson Manufacturers, Wellsburg, West Virginia, 1845-1860. Deep aquamarine, sheared mouth - pontil scar, pint.  
GI-108 Fine condition, good deep aquamarine color. \$600-1200

52. **Figural Bitters Type Bottle**, America, 1860-1880. Barrel form, sapphire blue, applied square collared mouth - smooth base, ht. 9 3/4 inches; (two shallow bubble bursts on barrel rings, 1/2 inch epoxy repair of a chip on the mouth).  
Beautiful color. Ex Rudy Edling collection. \$350-700



52



53

53. **"Baltimore" And Monument - "Corn For The World" And Ear Of Corn With Husk Historical Flask**, Baltimore Glass Works, Baltimore, Maryland, 1860-1870. Cornflower blue, applied square collared mouth - smooth base, quart; (potstone with three 1/8 inch radiations to the right of the monument).  
GVI-4 Beautiful light color, strong embossing. Ex Dennis Traverso collection. \$1000-2000

54. **Pottery Bennington Coachman Bottle**, Bennington Pottery, Bennington, Vermont, circa. 1849. In a form of a coachman with heavy coat holding a mug at his chest, tan and light brown glazes, ht. 9 7/8 inches. Similar to Barret color plate G, bottom row, center Great condition with no repairs, even the feet, which are most vulnerable. The base is marked "J. Lyman Fenton & Co. Fenton's Enamel/Patented /1849/Bennington. Vt."  
\$500-1000



54



55

55. **"Kossuth" And Bust - Tree In Leaf Portrait Calabash Flask**, America, 1845-1860. Yellow with a slight olive tone, applied sloping collared mouth with ring - huge tubular pontil scar, quart.  
GI-113 Good color. \$600-1200

56. **"A. M. Bininger & Co / No. 19 Broad St. / New York" Handled Whiskey Jug**, America, 1860-1870. Cylindrical with a short handle at the shoulder, light golden amber, applied double collared mouth - smooth base, ht. 7 1/2 inches; (some minor interior haze).  
H #184 Strongly embossed, lighter color than usual. \$250-500



56





57

57. "S (Star) C/Brown's/Herb Bitters/Philada." Figural Bitters Bottle, America, 1860-1880. Triangular with beveled corners, bright light to medium lime green, applied sloping collared mouth - smooth base, ht. 9 1/4 inches. R/H #B230 Strong embossing, beautiful light color, extremely rare, finest possible example. Acquired from the Golden Nugget. \$10000-20000



58. "Original/Pocahontas/Bitters/Y.Ferguson" Figural Bitters Bottle, America, 1860-1880. Barrel form, aquamarine, applied square collared mouth - smooth base, ht. 9 1/8 inches. R/H #086 Great condition, strong embossing, beautiful and rare. Ex Dennis Traverso collection. \$4000-8000



58



59

59. "Old / Homestead / Wild Cherry / Bitters" Figural Bitters Bottle, America, 1860-1880. Tall building form with clapboards, square with beveled corners and four sided roof panels, light golden yellow, applied sloping collared mouth - smooth base, ht. 9 1/2 inches; (shallow 3/4 inch bubble burst on the plain panel). R/H #037 Beautiful color, fine condition, strongly embossed. Ex Don Keating collection. \$1000-2000





60

60. **Columbia - Eagle Portrait Flask**, probably Kensington Glass Works, Philadelphia, Pennsylvania, 1825-1840. Cobalt blue, sheared mouth - pontil scar, pint; (epoxy repair of the right shoulder on the Columbia side). GI-119 Beautiful color, extremely rare. Ex George Austin collection. \$1500-3000



61

61. **"S.T./Drake's/1860/Plantation/X/Bitters" Figural Bitters Bottle**, America, 1860-1880. Tall log cabin form, four log, yellow with an olive tone, applied sloping collared mouth - smooth base, ht. 10 1/8 inches. R/H #D110 Beautiful color, fine condition, two partial labels. \$300-600



62

62. **Double Eagle Historical Flask**, probably Kentucky Glass Works, Louisville, Kentucky, 1840-1860. Citron, sheared mouth - tubular pontil scar, pint. GII-24 Beautiful and rare color, strong embossing, fine example. Ex Hal Wagner collection. \$2500-5000



63

63. **Eagle-Cornucopia Historical Flask**, probably Keene Marlboro Street Glassworks, Keene, New Hampshire, 1820-1850. Yellow olive, sheared mouth - pontil scar, pint plus; (1 inch hairline crack near the medial rib to the right of the eagle). GII-75 Bold embossing. Big, gutsy, beautiful bottle. Ex George Austin collection. \$1000-2000



64

64. **Sunburst Flask**, Coventry Glass Works, Coventry, Connecticut, 1815-1830. Light yellow olive, sheared mouth - pontil scar, pint. GVIII-3 Fine condition, a good example. \$800-1200



65

65. **Washington - Taylor Portrait Flask**, Dyottville Glass Works, Philadelphia, Pennsylvania, 1840-1860. Bright blue green, sheared mouth - tubular pontil scar, pint. GI-40c Beautiful condition, strong embossing, great color. An exceptional example. \$750-1500



66

66. **"Wm. Zoeller / Pittsburgh. PA. / Black Gin / For The Kidneys" Medicine Bottle**, America, 1860-1870. Square with beveled corners, copper amber, applied sloping collared mouth - smooth base, ht. 9 1/8 inches. Fine example. Rare. \$200-400



67

67. **Columbia Bust And "Kensington" - Eagle And "Union. Co" Portrait Flask**, Kensington Glass Works, Philadelphia, Pennsylvania, 1825-1840. Pale yellowish green, sheared mouth - pontil scar, half pint. GI-118 Brilliant glass, strongly embossed. Handsome, early little bottle. Very rare. Ex Mattatuck Museum auction. \$2000-4000





68

68. "Flora Temple" / (Full Figure Of A Horse) / "Harness Trot 2.19 3/4" - Reverse Plain Pictorial Flask, possibly Lancaster Glass Works, Lancaster, New York, 1860-1870. Bluish green, applied mouth with ring - smooth base, pint.

GXIII-23 Fine condition. Strong pretty color. Ex Pardoe collection. \$500-1000



69

69. Black Glass Handled Wine Bottle, England, 1680-1730. Squat, cylindrical wine with heavy applied solid handle, deep yellow olive, sheared mouth with string rim - pontil scar, ht. 4 3/4 inches, greatest dia. 5 1/4 inches; (severely cracked with a wonderful stapled repair).

Form similar to MW plate 52 #4 and #6 An exceptional piece of black glass. Somebody must have loved it very much, a great deal of work has gone into the repair of this great early wine bottle. Ex Rowland collection. \$1000-2000



70

70. Washington Bust - "Albany Glass Works / NY" Portrait Flask, Albany Glass Works, Albany, New York, 1848-1850. Pale green, sheared mouth - pontil scar, half pint.

GI-30 Fine condition. Pretty, attractive light color. Ex Charles B. Gardner collection. \$1000-2000



71

71. Dragoon - Hound Pictorial Flask, Baltimore Glass Works, Baltimore, Maryland, 1840-1860. Yellow with an olive green tone, applied double collared mouth - pontil scar, quart.

GXIII-16 Beautiful color. Ex George McConnell collection. \$1000-2000



72

72. Early Blown Bride's Bottle, probably Germany, circa 1727. Generally rectangular with concave corners, golden amber with multicolored enameled birds, plants and flowers; also an enameled inscription that Tom has translated to read "You love me / as I love you / I don't ask for more than that / 1727", sheared mouth with pewter collar - pontil scar, ht. 7 1/8 inches, wdth. 3 1/8 inches, dpth. 2 1/8 inches; (pewter cap missing). Tom's notes indicate that this is "Marion's favorite". Fine condition with beautiful color and near perfect enamel decorations. Ex Lipincott collection. \$1500-3000



73

73. "Louis Kossuth." And Bust - "U.S. Steam Frigate / Mississippi / S. Huffsey" And Frigate Portrait Flask, possibly Isabella Glass Works, New Brooklyn, New Jersey, 1845-1860. Brilliant medium bluish green, applied sloping collared mouth - iron pontil mark, quart.

GI-112 Beautiful color, strongly embossed, fine example. Ex Lipincott collection. \$1000-2000



74

74. "Jacob Pinkerton / Wahoo / & / Calisaya / Bitters" Figural Bitters Bottle, America, 1860-1870. Modified cabin form, square with column corners and four sided roof panels, golden amber, applied sloping collared mouth - smooth base, ht. 9 7/8 inches.

R/H #W3 Good color, fine condition and strong embossing. Ex Sam Laidacker. \$500-1000



75

75. "For Pike's Peak" And Prospector - Hunter Shooting Deer Historical Flask, possibly Ravenna Glass Works, Ravenna, Ohio, 1860-1870. Bright grass green, applied collared mouth with ring - smooth base, pint; (1/4 inch bruise at the base, a 1/4 inch flake at the base, some exterior stain has been coated, there is a 1/2 inch vertical crack behind the prospector). GXI-50 Would respond to a professional cleaning. Beautiful and unlisted color. Ex Lipincott collection. \$400-800



76

76. **Lot Of Three Colored Pressed Glass Cup Plates**, blue example has bust and "Henry Clay", green example has detailed pattern, amber example has simple patterns, probably Boston and Sandwich Glass Works, Sandwich, Massachusetts, 1830-1850. Blue, green and amber, dia. 3 1/2 inches, 3 1/8 inches and 3 3/16 inches; (some very minor chipping to some of the serrated edge on the green example).

Fine examples, good colors. Colored cup plates are fine early American tableware. \$250-500



77

77. **"Old Sachem / Bitters / And / Wigwam Tonic" Figural Bitters Bottle**, America, 1860-1880. Barrel form, medium

copper topaz with puce overtones, applied square collared mouth - smooth base, ht. 9 inches; (pinhead sized flake from the side of the mouth).

R/H #O46 Beautiful color, strong embossing. Ex Steve Gardner collection. \$1500-3000



78

78. **"Jenny Lind" And Bust - "Glass Work's / S. Huffsey" And Factory Portrait Calabash Flask**, probably Isabella Glass Works, New Brooklyn, New Jersey, 1845-1860. Yellow with an olive cast, applied sloping collared mouth with ring - pontil scar, quart.

GI-99 Fine condition, gorgeous color. \$2000-4000



79

79. **Double Eagle Historical Flask**, two eagle medallions set on a vertically ribbed flask, probably Louisville Glass Works, Louisville, Kentucky, 1840-1860. Light bright aquamarine, sheared mouth - pontil scar, half pint; (some minor exterior high point wear on the eagle's breast).

GII-30 Good embossing, fine condition, listed as very rare. Ex Charles B. Gardner collection. \$300-600



80

80. **"Lafayette" And Bust - Liberty Cap And Pole Portrait Flask**, Coventry Glass Works, Coventry, Connecticut, 1824-1825. Yellow olive, sheared mouth - pontil scar, half pint.

GI-86 Fine example with almost no exterior high point wear. Strong embossing, beautiful color with lots of tiny bubbles. Ex Pardoe collection. \$800-1600



81

81. **Double Eagle Historical Flask**, probably Kentucky Glass Works, Louisville, Kentucky, 1840-1860. Brilliant sapphire blue, sheared mouth - tubular pontil scar, pint; (a small area of mouth roughness on the top of the mouth).

GII-24 Beautiful color, strong embossing, exceptional example. Ex Charles Vuono collection. \$4000-8000



82

82. **Fancy Cologne Bottle**, probably Boston and Sandwich Glass Works, Sandwich, Massachusetts, 1840-1860. Rectangular with fancy scroll designs and a full figured lion in a rectangular panel, fiery opalescent, tooled flared collared mouth - pontil scar, ht. 4 inches, wdth. 2 3/4 inches. Similar to MW plate 111 #5. Beautiful. Rare. Purchased from Hector Bertoia. \$350-700



83

83. **Dancing Sailor - Banjo Player Pictorial Flask**, probably Chapman's Maryland Glass Works, Baltimore, Maryland, 1860-1870. Golden apricot, applied double collared mouth - smooth base, half pint.

GXIII-8 Great condition, strong embossing, different and beautiful color. \$600-1200





84

84. **Large Pickle Jar**, America, 1860-1870. Square with beveled corners and fancy cathedral arches on all four sides, medium yellow green, tooled rolled collared mouth - smooth base, ht. 13 1/4 inches. Similar to MW plate 73 #5 except considerably more fancy Great condition, beautiful color. \$2000-4000



85. **"R & G. A. Wright / Philada" Miniature Figural Bottle**, America, 1860-1880. In the form of a cannon barrel, plum amethyst, tooled mouth - smooth base, ht. 6 7/8 inches. Great condition. Only one other known example, that being the blue barrel in the Dr. Charles Aprill collection. Ex Gordon Bass collection auction, 1971. \$10000-20000



85



86

86. **Bust Of Columbia And "Kensington" - Eagle And "Union Co" Portrait Flask**, Kensington Glass Works, Philadelphia, Pennsylvania, 1825-1840. Aquamarine, sheared mouth - tubular pontil scar, pint. GI-117 Fine condition. Purchased from Mrs. Barlow in New Hope, Pennsylvania. \$800-1600

87. **Scroll Flask**, probably Louisville Glass Works, Louisville, Kentucky, 1845-1860. Yellow with a light olive tone, sheared mouth - tubular pontil scar, half pint. GIX-31 Rare, unlisted color. Beautiful. Ex Fred Salisbury collection. \$1500-3000



87



88

88. **Pattern Molded Flask**, pattern of depressed circles and sand dollar like forms, probably Tyrolean, 1800-1840. Dense purple, tooled flared mouth - pontil scar, ht. 6 1/4 inches, greatest width. 5 1/8 inches. Beautiful deep color. Ex Dennis Traverso collection. \$250-500

89. **Bust Of Benjamin Franklin - Bust Of Benjamin Franklin Portrait Flask**, Kensington Glass Works, Philadelphia, Pennsylvania, 1830-1850. Bright yellow green, sheared mouth - pontil scar, quart; (some minor exterior high point wear on the cheek and nose of Franklin, 1 inch body fissure). GI-97 Rare and beautiful color. \$2500-5000



89



90

90. **Sunburst Flask**, probably Baltimore Glass Works, Baltimore, Maryland, 1820-1830. Root beer amber with a puce tone, sheared mouth - pontil scar, pint. GVIII-24 Beautiful color, fine condition. Ex Lipincott collection. \$1200-2400

91. **Cornucopia - Urn Pictorial Flask**, Lancaster Glass Works, Lancaster, New York, 1840-1860. Blue green, applied sloping collared mouth - pontil scar, pint. GIII-17 Great color, fine condition. Ex Vieve and Bonnie Yarbrough collection. \$400-800



91



92

92. **"J. Mason." Sealed Wine Bottle**, probably England, 1795-1810. Magnum sized cylinder, deep yellow olive, sheared mouth with string rim - pontil scar, ht. 11 1/2 inches, base dia. 5 1/2 inches. Thought to have been made for Jonathan Mason, United States Senator of Boston during the period of 1800 to 1803. Rare, different form than other Mason bottles we have seen. Great condition, an historic bottle. \$1500-3000

93. **"Potter & Bodine / Philadelphia" Fruit Jar**, Potter and Bodine Manufacturers, Philadelphia, Pennsylvania, 1870-1890. Cylindrical, aquamarine, ground mouth with unmarked tin lid - smooth base, quart. L #2381 \$200-400



93





94

94. **Masonic Arch and Emblems - Eagle Historical Flask**, probably Keene Marlboro Street Glassworks, Keene, New Hampshire, 1820-1830. Light bluish green with wide profuse amethyst striations, heavy tooled round collared mouth - pontil scar, pint. Probably GIV-8 Beautiful bottle, great color, fine condition. A big heavy "2 pounder". Ex Sam Laidacker. \$5000-10000



95. **"General Washington" And Bust - "E Pluribus Unum" And Eagle / "T.W.D" Portrait Flask**, Kensington Glass Works, Philadelphia, Pennsylvania, 1820-1830. Bright medium bluish green, sheared mouth - tubular pontil scar, pint. GI-14 Beautiful color, good embossing, fine example of a colored "fire cracker". Tom noted that "this was the first of many good bottles purchased from Sam Laidacker". \$5000-10000



95



96

96. "Benjamin Franklin" And Bust - "T.W. Dyott, M.D." And Bust Portrait Flask, Kensington Glass Works, Philadelphia, Pennsylvania, 1830-1850. Light bluish green, sheared mouth - pontil scar, pint; (some exterior high point wear on the cheeks of the two busts).

GI-94 Stronger color than most, good embossing and lots of it. Ex Pardoe collection. \$400-800

97. "National / Bitters" Figural Bitters Bottle, America, 1860-1880. In the form of an ear of corn, olive yellow, applied sloping collared mouth with ring - smooth base, ht. 12 1/4 inches.

R/H #N8 Beautiful and rare color, fine condition. \$2000-4000



97



98

98. Washington - Reverse Plain Portrait Flask, Lockport Glass Works, Lockport, New York, 1840-1860. Deep emerald green, applied mouth with ring - pontil scar, pint; (some wear around the ring of the applied mouth, 3 inch crack on plain panel. Crack is not obvious).

GI-48 Exceptional color. \$750-1500

99. Sunburst Flask, possibly Baltimore Glass Works, Baltimore, Maryland, 1820-1830. Citron, sheared mouth - pontil scar, half pint; (potstone has 1/8 inch fissure).

GVIII-27 Beautiful color, generally fine condition. \$300-600



99



100

100. Pair of Barber Bottles, probably America, 1880-1920. Bulbous with long necks and Mary Gregory type boy and girl playing tennis enameled decoration, cobalt blue with white enamel, tooled mouths - pontil scars, ht. 8 inches.

Similar to the matched set RH page 17 Beautiful color, well executed enamel decorations. \$300-600

101. Summer Tree - Summer Tree Pictorial Flask, probably Baltimore Glass Works, Baltimore, Maryland, 1840-1860. Light bluish green, applied sloping collared mouth with ring - pontil scar, quart.

GX-18 Good strong embossing, fine color, fine condition. Ex Mattatuck Museum. \$400-800



101



102

102. Target Ball, "WW Greener St Marys Works Birmm & 68 Haymarket, London", England, 1880-1900. Diamond pattern above and below embossed center band, pale to medium amethyst, sheared mouth, dia. 2 5/8 inches.

Beautiful color, fine condition. \$250-500

103. "Good Game" And Stag - Willow Tree Pictorial Flask, probably Coffin and Hay Manufacturers, Hammonton, New Jersey, 1830-1850. Aquamarine, sheared mouth - pontil scar, half pint.

GX-2 Fine example with brilliant glass and strong embossing. An exceptional example. Ex Charles B. Gardner collection. \$300-600



103





104

104. **Pattern Molded Flask**, 18 diamond pattern, probably America, 1800-1830. Citron shading to amber throughout the shoulders and deeper to the neck, sheared mouth - pontil scar, ht. 6 1/4 inches, greatest width. 5 inches; (some exterior high point wear).  
Ex William Pollard collection, ex Fred Salisbury collection. \$600-1200

105. **Target Ball**, shooter, possibly America, 1880-1900. Diamond pattern interrupted by two medallions with embossed shooter, deep grass green, sheared mouth, dia. 2 5/8 inches; (somewhat weakened impression, a very crude ball).  
Beautiful and rare color, fine condition. \$300-600



105



106

106. **Large Scroll Flask**, probably Kentucky Glass Works, Louisville, Kentucky, 1845-1860. Deep aquamarine, sheared mouth - iron pontil mark, ht. 11 3/8 inches, 2 1/2 quarts.  
GIX-29 Rare and in great condition. \$500-1000

107. **"Old Sagem / Bitters / And / Wigwam Tonic" Figural Bitters Bottle**, America, 1860-1880. Barrel form, medium amethyst, applied square collared mouth - smooth base, ht. 9 inches.  
R/H #O46 Great condition, rare and beautiful color. Ex Steve Gardner collection. \$2000-4000



107



108

108. **"Jenny Lind" And Bust - Factory Portrait Calabash Flask**, probably Ravenna Glass Works, Ravenna, Ohio, 1845-1860. Brilliant medium teal blue, applied heavy round collared mouth - red iron pontil mark, quart.  
GI-104 Beautiful color, fine condition. Ex Harry Fry collection. \$2500-5000

109. **"M'Carty & Torreyson / (Star) / Manufacturers / Wellsburg, VA." - Large Sunburst With Concentric Rings At The Center Scroll Type Flask**, McCarty And Torreyson Manufacturers, Wellsburg, West Virginia, 1845-1860. Light bluish green, sheared mouth - iron pontil mark, pint.  
GIX-48 Bright clean example with strong embossing. \$1200-2400



109



110

110. **"Griffith Hyatt & Co. / Baltimore" Handled Whiskey Jug**, probably a Baltimore glasshouse, Baltimore, Maryland, 1840-1860. Bulbous with two flattened panels, one of which has a partial floral and leaf paper label, small solid handle at the shoulder, olive amber, applied square collared mouth - tubular pontil scar, ht. 6 3/4 inches; (small shallow bubble burst on the shoulder).  
Similar to H#493 Good color, strong embossing, fine condition. \$350-700

111. **"Baltimore" / (Anchor) / Glass Works" - Phoenix Rising From "Resurgam" Historical Flask**, Baltimore Glass Works, Baltimore, Maryland, 1860-1870. Citron, applied short sloping collared mouth - smooth base, pint.  
GXIII-53 Beautiful color, good embossing, unlisted color. Ex George Austin collection. \$1000-2000



111



112

112. **Washington - Taylor Portrait Flask**, Dyottville Glass Works, Philadelphia, Pennsylvania, 1840-1860. Brilliant medium green, sheared mouth - unusual open and iron pontil scar, pint; (3/8 inch inside mouth chip).

GI-38 Beautiful color, good condition.

\$750-1500

113. **Pattern Molded Pocket Bottle**, 12 diamond pattern, probably Stiegel's American Flint Glass Manufacturers, 1763-1774. Flattened bulbous form, brilliant medium amethyst, sheared mouth - pontil scar, ht. 4 5/8 inches, greatest wtd. 3 3/4 inches; (1/8 inch flat flake from the side of the mouth, some light interior haze near the base).

Similar to MW plate II #2 Beautiful color. Ex Fred Salisbury collection.

\$2000-4000



113



114

114. **"H.P. Pharazyn / Phila / Right Secured" Figural Whiskey Bottle**, America, 1860-1880. In the form of an Indian maiden warrior, golden amber with yellow arms, shoulders and head with some remaining painted details, inward rolled mouth - smooth base, ht. 12 1/4 inches; (some light interior haze and pebbled appearance).

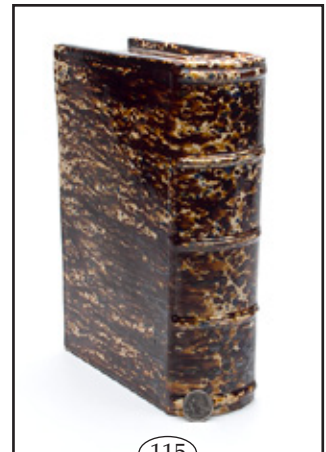
H #1173 Beautiful example, fine condition. Ex Charles Dascenzo.

\$1200-2400

115. **Bennington Book Bottle**, J. Lyman Fenton Company, Bennington, Vermont, 1840-1860. In the form of a large untitled book, brown, tan, cream, green and blue glazes, ht. 11 inches, dpth. 8 inches, wtd. 3 1/4 inches.

Similar to Barret plate 411, left Great condition, enormous size, beautiful colors. Ex George McKearin collection, ex Edmund & Jayne Blaske collection #442. Exceptional.

\$3000-6000



115



116

116. **Pot Lid**, "H.P. & W.C. Taylor / Perfumers / Philadelphia / (Washington And Soldiers On The River Bank) / Washington Crossing The Delaware", probably America, 1860-1880. White pottery with purple transfer, includes pot, dia. 3 1/2 inches; (base of the pot has a 2 inch shallow chip at the rim).

See "American Pot Lids" by Barbara and Sonny Jackson, 1987, #198 Pot lid in fine condition.

\$400-800

117. **Pot Lid**, "Worsley's / Sponaceous / Shaving Compound / (Independence Hall / Philadelphia With Building, Small Trees And People Walking In The Foreground) / Philadelphia.", probably America, 1860-1880. White pottery with black transfer, pot included, dia. 3 7/8 inches.

See "America Pot Lids" by Barbara and Sonny Jackson, 1987, #202 Fine condition with but one small chip on the rim of the pot.

\$400-800



117



118

118. **Pot Lid**, "Jules Huel Perfumer / Premium Almond Cream / (Bust of Franklin) / Philadelphia.", probably America, 1860-1880. White pottery with black transfer, includes pot with letter transfer, dia. 3 3/8 inches; (small flakes on pot).

See "America Pot Lids" by Barbara and Sonny Jackson, 1987, #62 Pot lid in fine condition.

\$400-800

119. **Pot Lid**, "Worsley / Wholesale / Perfumer / (Capitol at Washington) / Philadelphia.", probably America, 1860-1880. White pottery with black transfer, dia. 3 5/8 inches.

See "American Pot Lids" by Barbara and Sonny Jackson, 1987, #203 Superior condition, Capitol Building is shown with the original smaller dome.

\$500-1000



119



120. **Wood Medicine Advertising Display Cabinet**, "Hanford's / Balsam of Myrrh", America, 1880-1910. Fancy victorian oak, glass door front cabinet with key, golden brown grained oak wood with gold lettering above and below the glass of the door, ht. 24 inches, wdth. 12 1/2 inches, dpth. 9 inches. Great condition, beautiful example. Includes a boxed bottle of medicine that it is advertising. Yellow box with profuse black lettering. \$600-1200

121. **Currier and Ives Print**, "The Celebrated Trotting Mare Flora Temple, Driven by James D. McMann./ She entered in 95 races, winning 75, received forfeit 4 and 2 drawn. Best time in harness mile heat 2:19 3/4 two mile heats 4:5 1/2, two wagon; mile heats 2:25". Beautiful curly maple frame with mutlicolor print, professionally framed and matted, ht. 17 1/2 inches, wdth. 21 3/4 inches; (two tears have been repaired directly behind the jockey, one small dark spot in front of the horse near the matting). \$300-600

122. **Framed Advertising Program Broadside**, among other interesting performances, the program states "Program / Of the / Canastota Fair / September 1883 / Great Musical Concerts / Grand Balloon Ascension / Japanese Day Fireworks. / Glass Ball Match". Yellow broadside with black lettering and air balloon ascension images, rectangular black frame, ht. 36 inches, wdth. 12 1/2 inches. Great condition. For glass collectors, the important part is the "Glass Ball Match / Between Geo. C. Luther, who has challenged both Dr. Carver and Bogardus" with other interesting achievements of both. \$750-1500

123. **Framed Medicine Cardboard Advertising Sign**, "Use Hall's / Vegetable Sicilian / Hair Renewer / And Your Thin Gray Locks Will / Thicken Up and Be Restored To Their / Youthful Color and beauty. / (beautiful woman with long black hair handing the medicine to a young gentleman in need) / R.E. Hall & Co., Proprietors, Nashua N.H", America 1870-1900. Multicolored lithograph in original Victorian frame, ht. 22 1/2 inches, wdth. 16 1/2 inches; (some minor surface paper loss immediately to the left of the word "Use"). Fine condition, beautiful color. Highly colorful, big and attractive advertising piece. \$400-800



120



123



122



121

10/18 '76

Dear Marian:

Godd to hear from you and to know that Tom is keeping busy. Better to wear out or so the saying goes.

You did see some great collections enroute to the big one. The reports on St. Louis are varied. I guess it depended on where you sat. Prices did hold up and mebbe that is good for the hobby, provided they don't get beyond the average person.

I remember the red expanded diamond bottle that Sam has had for twenty five or so years. I had two of them and let Crawford Wettlaufer have one. I do not know what happened to it. I am enclosing a picture of the one I have. You are right, they are beautiful bottles. When you are finished with it, please return to me.

The McKinley-Bryan bottles always got away from me. They are nice and who knows, I may get them, one of these days.

What color of blue is the famous sunburst? I have never seen one in that color, except one that was made in Mexico.

The Skinner auction has nothing for me. But, I might go along for the ride. You can bet that Bill <sup>POLLARD</sup> will be after a couple and he does not know when to stop. He may have a little trouble this time.

Fall is here and the outdoor work piles up. Somehow it will get done.

regards

George

AUSTIN



Mrs. Tom McCandless

62 Lafayette Street

Hopewell, N. J. 08525

Correspondence between Marion McCandless and George Austin concerning the provenance of the ruby red pattern molded flask (Lot 1).





# Norman C. Heckler & Company

Auctioneers and Appraisers of Antique Bottles and Glass,  
Period Decorative Arts, Singular Art Objects, and Estates  
79 Bradford Corner Road, Woodstock Valley, CT 06282  
(860) 974-1634 www.hecklerauction.com f:(860) 974-2003



Cover Lots From Left To Right:  
174, 2, 173, 57, 47, 125, 136, 22, 145, 25, 48, 172, 85, 196, 1, 228